

Govt. of India
Ministry of Human Resource Development
Dept. of School Education and Literacy
Mid Day Meal Division

PAB-MDM meeting
to consider and approve AWP&B 2018-19

(Date of the meeting: 20.06.2018)



APPRAISAL NOTE

STATE : ODISHA

INDEX

Sl. No.	CHAPTER	Page no.
	Pre-requisite steps for submission of AWP&B	
Part-A	General Information	
Part-B	Review of performance during 2017-18	
Part-C	Recommendations of Appraisal team and quantification of variables for central assistance during 2018-19	
Part-D	Fact sheet.	

Status on Pre requisite steps required for submission of AWP&B

Pre-requisite step	Status
Plan should be approved by SSMC Meeting	Yes
100% payment of honorarium shall be made to cook cum helpers up to 31.03.2018.	Yes
100% payment of cost of food grains shall be made to FCI up to 31st March, 2018	Yes
Separate and detailed MME plan.	No
Bank account should be opened for cook cum helpers	Yes
Plan should also be submitted through MDM-MIS	Yes
Annual and Monthly data entry for the FY 2017-18 should be completed up to March, 2018.	Yes
ATN on commitments given by the State Govt. during PAB Meeting of 2017-18.	Yes
ATN on findings of reports of MI and recommendations of JRM reports	Yes
Plan should be submitted within the scheduled date in hard and soft copies both.	Yes

Issues

- 1) Delay (1-2 months) in the release of funds.
- 2) Delay in the construction of kitchen-cum-stores.
- 3) Food Security Allowance paid to 44336 children in 260 schools in lieu of MDM not served.
- 4) 5 meal samples found below norms out of 61.
- 5) 171 meetings of DLSMC against mandated 360.
- 6) Health check up of 77% students under RBSK.
- 7) LPG available in 38 % schools only.

Best Practices

- 1) Additional contribution (Rs.400) in honorarium from Jan 18
- 2) Additional contribution in cooking cost.
- 3) Egg/seasonal fruits given twice a week from State's funds.
- 4) Saree allowance to female CCH from State Resources.
- 5) E-transfer of funds
- 6) 278284 proxy numbers deleted due to Aadhar.
- 7) Model Hand wash stations set up in 3375 schools.
- 8) Weighing machines provided through CSR in 5613 schools.
- 9) Rice fortification in Gajapati from State resources.
- 10) Evaluation Study on impact of MDM assigned to ICMR.

Part-A : General Information

Introduction:

Mid-Day Meal is a flagship programme of Govt. which caters to the supplementary nutritional needs of school going children. It is the largest school feeding programme of the world. In Odisha 58,784 kitchens are run every day to feed 48,41,657 children. Mid Day Meal programme is a scheme not only to drive out class room hunger but also to build the nation by providing nutrition to the 10.03 crore children who are the future of India.

Brief history

- ❑ 1995: Introduced in 2408 blocks to provide 100 grams foodgrains per child/ school day under National Program for Nutrition Support to Primary Education.
- ❑ 1997-98: Extended in 1997-98 to all primary schools.
- ❑ 2001: On November 28, 2001 the Supreme Court of India made it mandatory for the State Government to provide cooked meal instead of dry ration.
- ❑ 2002-03: Extended in 2002-03 to cover EGS/AIE centres.
- ❑ 2004: Supreme Court Orders in P.U.C.L case for providing hot cooked meal to all the schools fully funded by the Centre.
- ❑ 2006-07: Provision of Central assistance for kitchen-cum-store and kitchen devices @ Rs. 60,000 per unit and Rs. 5000 per school respectively.
- ❑ 2007-08: Extended to upper primary.
- ❑ 2009-10: Revision of Scheme
 - Food norm for upper primary.
 - Separate provision for honorarium to CCH.
 - Revision of norms for kitchen-cum-store and transport assistance for special category States (11).
- ❑ 2010-11: Decentralization of payment of cost of food grains to districts w.e.f. 1.4.2010.
- ❑ October, 2010: Inclusion of NCLP schools under MDMS.
- ❑ November, 2011: Provision at par with upper primary for NCLP schools.
- July, 2012: Revision of Cooking cost by 7.5%

1. Basic Information:

(Year 2017-18)

S. No.	INDICATORS	STATUS		
1. No. of Institutions		PRY	U PRY	TOTAL
i)	Approved by MDM-PAB for 2017-18	34231	28477	62708
ii)	Covered during the year	33936	24848	58784
2. No. of Children				
i)	Approved by MDM-PAB			
ii)	Enrollment as on 30.9.2017	2945988	1895669	4841657
ii)	Average No. of children availed MDM during 01.04.2017 to 31.03.2018	2654750	1618403	4273153
3. Coverage of children as per Quarterly Progress Report (QPR)				
i)	Average no. of children availed MDM as per QPR-1	2651958	1585958	4217545
ii)	Average no. of children availed MDM as per QPR-2	2737061	1640643	4377704
iii)	Average no. of children availed MDM as per QPR-3	2622149	1637493	4259642
iv)	Average no. of children availed MDM as per QPR-4	2514993	1538305	4053298
4. No. of Working Days				
i)	Approved for 2017-18	239	232	
ii)	Covered during 2017-18.	239	232	
5. Per unit cooking cost Per child per day (in Rs.)				
AVERAGE UNIT COOKING COST PCPD		4.13	6.18	
State's contributions in cooking cost per child per day		1.65	2.47	

**percentage to enrolment*

The minimum mandatory State Share is Rs. 1.65 and Rs.2.47 per child per day for primary and upper primary respectively.

Part-B : Review of Performance in 2017-18 (01.04.17 to 31.03.2018)

2. Based on the information provided by the State Government in its AWP&B 2018-19, the performance during 2017-18 (01.04.17 to 31 03.2018) was reviewed. The major issues in implementation during 2017-18 are summarized as under: -

2.0 Coverage of Institutions

Coverage in terms of No. of institutions.

Difference between PAB Approval (Target) Vs No. of institutions covered (Achievement) –

i) PRIMARY

The number of existing institutions	= 33939
Number of institutions covered during 01.04.17 to 31.03.18	= 33939 (100%)

ii) UPPER PRIMARY WITH PRIMARY CLASSES

The number of existing institutions	= 17805
Number of institutions covered during 01.04.17 to 31.03.18	= 17805 (100%)

ii) UPPER PRIMARY

The number of existing institutions	= 7043
Number of institutions covered during 01.04.17 to 31.03.18	= 7043 (100%)

The information reveals that all the eligible institutions in the State have been covered under MDMS.

2.1 Coverage of Children

2.1.1 Coverage against Enrolment :

a) Primary - Coverage in terms of No. of children. Difference between Enrolment vs Average No. of Children Aailed MDM (Achievement) (Refer Table 2.3 of the Analysis Sheet).

Total Enrolment as on 30.09.2017	= 2945988
Average number of children aailed MDM during 01.04.17 to 31.03.18	= 2654750 (90%)

b) Upper Primary : Coverage in terms of No. of children. Difference between Enrolment vs Average No. of Children Aailed MDM (Achievement) – UPPER PRIMARY (Refer Table 2.4 of the Analysis Sheet).

Total Enrolment as on 30.09.2017	=1895669
Average number of children aailed MDM during 01.04.17 to 31.03.18	= 1618403 (85%)

2.1.2 Coverage against PAB-MDM approval :

a) Primary : Coverage in terms of No. of children. Difference between PAB Approval (Target) vs Average No. of Children Availing MDM (Achievement) (Refer Table 2.5 of the Analysis Sheet).

The number of children approved by MDM PAB for 2017-18	= 2961774
--	-----------

Average number of children availed MDM during 01.04.17 to 31.03.18 = 2654750 (90%)

b) Upper Primary: Coverage in terms of No. of children. Difference between PAB Approval

**(Target) Vs Average No. of Children Availing MDM (Achievement
(Refer Table 2.6 of the Analysis Sheet).**

The number of children approved by MDM PAB for 2017-18 = 1657912
Average number of children availed MDM during 01.04.17 to 31.03.18 = 1618403(92%)

2.1.3 No. of Meals: Difference between No. of meal to be served (Target) Vs. No. of meals served (Achievement)- PY+U PY (Refer Table 2.7 of the Analysis Sheet).

The number of meals to be served during 01.04.17 to 31.03.18 = 11041.05 Lakh
The number of meals served during 01.04.17 to 31.03.18 = 9719.57 Lakh(88%)

2.2 FOODGRAINS (PRIMARY + UPPER PRIMARY)

2.2.1 Level of Opening balance as on 01.04.17: (Refer Table 3.2 of the Analysis Sheet).

The opening balance of food grain with the State as on 01.04.2017 was 9647.26 MT. The total allocation of food grains during 2017-18 is 130222.55 MT.. More than 10% opening balance as on 01.04.2017 was available at Puri (16%), Kendrapara (17%) and Sambalpur (19%).

2.2.2 Level of unspent balance as on 31.03.18: (Refer Table 3.3 of the Analysis Sheet).

The unutilized food grain with the State as on 31.03.2018 was 10690.12 MT (11%). However some districts had more than 10% of unutilized food grains with them. They are Sonepur (15%), Kendrapada (2350, Kandhmal (25%) and Sambalpur (31%). Availability of huge unutilized food grain with these districts is indicative of management issues in the food grain supply chain.

2.2.3 Availability of Food grains: (01.04.17 to 31.03.18) (Refer Table 3.5 of the Analysis sheet).

The State Government Lifted 116646.39 MT of food grain from Food Corporation of India. The State had unutilized food grain of 9647.26 MTs with it at the beginning of the year. Thus the total availability of food grain with the State was 126293.65 MTs which is 97% of the annual allocation of 130222.54 MTs of food grains to the State during 2017-18.

2.2.4 Utilization of food grains: (Refer Table 3.7 of the Analysis sheet)

The State utilized 115603.33 MTs (89%) of food grains against the allocation of 45547.21 MTs. Some districts had utilized less %age of food grains. The inter district utilization ranged between 80% to 95%. Less utilization of food grain was observed in Gaajapati (80%), Kandhmal (82%), Nayagada & Bolangir (83%).

2.2.5 Payment of cost of foodgrains to FCI: (Refer Table 3.9 of the Analysis sheet)

The FCI has submitted bills for Rs. 3499.39 lakh during 2017-18 towards cost of food grains. The State has made payment of Rs. 3499.39 lakh (100%) to FCI.

2.3 COOKING COST (PRIMARY + UPPER PRIMARY)

2.3.1 Level of Opening balance as on 01.04.17: (Refer Table 4.1.1 of the Analysis Sheet)

The State had opening balance of Rs. 3472.19 lakh (6%) as on 01.04.2017.

2.3.2 Level of closing balance as on 31.03.2018 : (Refer Table 4.1.2 of the Analysis Sheet)

The closing balance of cooking cost was Rs. 5952.99 lakh (10 %) of the annual allocation of Rs. 59483.43 lakh. However, some districts had relatively higher closing balance of cooking cost. They are Bolangir & Nayagarh (16%) and Boudh & Kandhmal (17%). Availability of unutilized cooking cost more than the average utilization (10%) by the State indicates the problems in the implementation of the scheme in these districts.

2.3.3 Utilization of Cooking cost : (Refer Table 4.5 of the Analysis Sheet).

The State has utilized Rs. 52799.07 lakh (89%) against the allocation of 59483.43 lakh during 2017-18. Less utilization of cooking cost was observed in Gaajapati (80%), Kandhmal (82%), Nayagada & Bolangir (83%).

2.4 Reconciliation of utilization and performance during 2017-18 (01.04.17 to 31.03.2018)

2.4.1 Mismatch in utilization of Food grains vis-à-vis cooking cost: (Refer Table – 5.1 of Analysis Sheet)

Ideally the percentage utilization of cooking costs and food grains should tally with each other. The utilization of cooking cost (89%) and food grains (89%) matches with each other. Thus, there is no mismatch in the utilization of cooking cost and food grains.

2.5 Cook-Cum-Helper (PRIMARY + UPPER PRIMARY): (Refer Table – 6.2 of Analysis Sheet).

The State has engaged 119951 cook-cum-helpers (CCH) against PAB approval of 145522. Thus, 25571 CCH have not been engaged by the State. The CCH are paid honorarium @ Rs.1000.00 per month per cook-cum-helper for ten months in a year. This honorarium is shared between the Centre and the State in 60:40 ratio. However, States can contribute more from their own resources. The State is making additional contribution of Rs.400 per CCH per month over and above its minimum mandatory contribution of Rs.400 per CCH per month with effect from 1st January, 2018.

The State had zero opening balance on 01.04.2017. An amount of Rs. 15245.98 lakh was released for payment of honorarium to CCH. The State has made payment of Rs. 15245.98 lakh (105%) which indicates that State has made additional contribution from its resources. The State proposes to engage the 119951.

2.6 Utilization of MME (Refer Table – 7.2 of Analysis Sheet)

The State had zero opening balance as on 01.04.2017. The annual allocation was Rs. 825.66 lakh against which 819.59 lakh were released during 2017-18. The State has utilized Rs.819.59 lakh (99%) of the annual allocation.

2.7 Utilization of Transportation Assistance (Refer Table – 8.2 of Analysis Sheet)

The State had negative opening balance of Rs. 15.36 lakh as on 01.04.2017. The annual allocation for Transport Assistance during 2017-18 is Rs. 976.67 lakh. An amount of Rs. 802.20 lakh were released to the State. Thus the total availability of central assistance for TA was 817.56 lakh.

The State had lifted 116646.39 MTs of food grain from FCI during 2017-18. Thus, transportation assistance @ 75 per quintal for carrying the food grains to schools is Rs. 874.85 lakh. The State has incurred the expenditure of Rs. 749.81 lakh (77% of annual allocation) on transportation of food grains from FCI godowns to schools.

2.8 Construction of Kitchen-cum-stores (Reference Table -9.1.3 of Analysis Sheet)

The non-recurring central assistance of Rs. 40579,81 lakh was released during 2006-07 to 2009-10 for the construction of 69152 kitchen-cum-stores. The State has utilized Rs. 26012.40 lakh for constructing 43354 kitchen-cum-stores. The construction work is in progress for 25798 kitchen-cum-stores.

The State has reported in its AWP&B 2018-19 that there are 58784 schools in the State. MHRD had sanctioned 69152 kitchen-cum-stores on the basis of schools reported by the State during 2006-07 to 2009-10. Consequent upon the rationalization and merger of schools with low enrolment with neighboring schools, the number of schools in the State is 58784. Thus the State has central assistance for 10368 schools more than the existing schools. The State may review its requirement of funds for kitchen-cum-stores and refund the central assistance for excess number of schools.

2.9 Procurement of Kitchen devices (Reference Table -9.2.3 of Analysis sheet)

The non-recurring central assistance @ 5000 for each school was released during 2006-07 to 2009-10 for the procurement of kitchen devices for 67883 schools. Non recurring central assistance was also released 2012-3 to 2017-18 for the replacement of kitchen devices in 66383 schools. The State has utilized the entire non-recurring central assistance for the procurement and replacement of sanctioned kitchen devices.

The State has submitted a proposal for the procure of kitchen devices for 190 new schools.

3. Data Entry Status on the MIS Web Portal

3.1 Automated Monitoring Systems (AMS)

Dictrict wise Meals Served on : 13 May'2018 Odisha								
S.No.	District	Total Schools	Reported Schools	% Reported Schools	Total Enrolment	Reported Schools Enrolment	Meals Served	Meals Served Percentage
1	CUTTACK	2274	1	0%	179407	17	15	88.24%
2	GAJAPATI	1318	1	0%	84271	51	39	76.47%
3	GANJAM	3566	1	0%	358012	59	56	94.92%
4	KANDHAMAL	1938	1	0%	122922	22	22	100.00%
5	KENDRAPARA	1941	1	0%	142378	35	15	42.86%
6	KORAPUT	2435	2	0%	198006	67	53	79.10%
7	MAYURBHANJ	4357	2	0%	359053	80	81	101.25%
8	NABARANGAPUR	1948	1	0%	212989	37	37	100.00%
	Total	19777	10	0%	1657038	368	318	86.41%

3.2 Annual Data Entry:

FY-2017-18					
Annual Data Entry Status_ODISHA					
S. No.	District	Total Schools	Completed(Saved)	Pending	% Completed
1	ANUGUL	1652	1650	2	100%
2	BALASORE	2907	2907	0	100%
3	BARGARH	1824	1824	0	100%
4	BHADRAK	1927	1927	0	100%
5	BOLANGIR	2369	2369	0	100%
6	BOUDH	805	805	0	100%
7	CUTTACK	2403	2403	0	100%
8	DEOGARH	598	598	0	100%
9	DHENKANAL	1555	1555	0	100%
10	GAJAPATI	1413	1413	0	100%
11	GANJAM	3595	3595	0	100%
12	JAGATSINGHPUR	1533	1533	0	100%
13	JAJAPUR	2544	2541	3	100%
14	JHARSUGUDA	690	690	0	100%
15	KALAHANDI	2452	2452	0	100%
16	KANDHAMAL	1950	1950	0	100%
17	KENDRAPARA	2032	2032	0	100%
18	KEONJHAR	2893	2893	0	100%
19	KHORDHA	1580	1580	0	100%
20	KORAPUT	2695	2692	3	100%
21	MALKANGIRI	1388	1388	0	100%
22	MAYURBHANJ	4467	4467	0	100%
23	NABARANGAPUR	1955	1954	1	100%
24	NAYAGARH	1206	1206	0	100%
25	NUAPADA	1030	1030	0	100%
26	PURI	2168	2168	0	100%
27	RAYAGADA	2034	2034	0	100%
28	SAMBALPUR	1409	1409	0	100%
29	SONEPUR	927	927	0	100%
30	SUNDERGARH	2675	2675	0	100%
	Total	58676	58667	9	100%

Source: www.trgmnm.nic.in

as on 21 May'18 till 13:31 hrs

3.3 Monthly Data Entry

(Figures in %)

FY 2017-18

Monthly Data Entry Status_ODISHA

S. No.	District	Total Schools	% April	% May	% June	% July	% Aug	% Sept	% Oct	% Nov	%Dec	Jan%	Feb %	Mar %	Average %
1	ANUGUL	1652	95%	95%	95%	94%	94%	93%	93%	92%	91%	89%	80%	59%	89%
2	BALASORE	2907	100%	100%	100%	100%	100%	100%	100%	100%	100%	98%	93%	79%	97%
3	BARGARH	1824	93%	93%	92%	92%	91%	90%	88%	87%	85%	84%	68%	53%	85%
4	BHADRAK	1927	98%	98%	97%	96%	94%	93%	92%	92%	90%	78%	55%	32%	85%
5	BOLANGIR	2369	100%	100%	99%	99%	99%	99%	99%	99%	99%	99%	99%	92%	99%
6	BOUDH	805	100%	100%	100%	100%	100%	100%	100%	100%	100%	100%	100%	100%	100%
7	CUTTACK	2403	100%	100%	100%	100%	100%	100%	100%	100%	99%	99%	99%	98%	100%
8	DEOGARH	598	95%	95%	94%	93%	92%	92%	90%	89%	88%	87%	85%	63%	89%
9	DHENKANAL	1555	100%	100%	100%	100%	100%	100%	100%	100%	100%	100%	100%	99%	100%
10	GAJAPATI	1413	100%	100%	100%	100%	100%	100%	100%	100%	100%	99%	99%	97%	99%
11	GANJAM	3595	99%	99%	99%	98%	98%	98%	98%	98%	97%	96%	95%	90%	97%
12	JAGATSINGHPUR	1533	97%	96%	96%	96%	96%	96%	96%	95%	95%	94%	92%	83%	94%
13	JAJAPUR	2544	99%	99%	99%	99%	99%	99%	99%	98%	97%	97%	95%	88%	97%
14	JHARSUGUDA	690	100%	100%	100%	100%	100%	100%	100%	100%	100%	100%	100%	100%	100%
15	KALAHANDI	2452	99%	99%	99%	99%	99%	99%	99%	99%	99%	98%	98%	97%	99%
16	KANDHAMAL	1950	100%	100%	100%	100%	100%	100%	100%	100%	100%	100%	100%	100%	100%
17	KENDRAPARA	2032	100%	100%	100%	100%	100%	100%	99%	99%	97%	81%	68%	51%	91%
18	KEONJHAR	2893	100%	100%	100%	100%	100%	100%	100%	100%	100%	100%	100%	98%	100%
19	KHORDHA	1580	100%	100%	100%	100%	100%	100%	100%	100%	97%	90%	90%	84%	97%
20	KORAPUT	2695	73%	72%	70%	68%	54%	52%	50%	43%	38%	31%	26%	20%	50%
21	MALKANGIRI	1388	95%	95%	94%	92%	92%	91%	89%	88%	67%	63%	45%	41%	79%
22	MAYURBHANJ	4467	100%	100%	100%	100%	100%	100%	100%	100%	96%	95%	89%	87%	97%
23	NABARANGAPUR	1955	100%	100%	100%	100%	100%	100%	100%	100%	100%	100%	100%	99%	100%
24	NAYAGARH	1206	100%	100%	100%	100%	100%	100%	100%	100%	100%	100%	81%	71%	96%
25	NUAPADA	1030	100%	100%	100%	100%	100%	100%	100%	100%	100%	100%	100%	99%	100%
26	PURI	2168	100%	100%	100%	100%	100%	100%	100%	100%	100%	99%	94%	61%	96%
27	RAYAGADA	2034	99%	99%	99%	99%	99%	99%	99%	99%	99%	98%	94%	92%	98%
28	SAMBALPUR	1409	100%	100%	100%	100%	100%	100%	100%	100%	100%	100%	100%	100%	100%
29	SONEPUR	927	99%	99%	99%	99%	99%	99%	98%	97%	84%	66%	49%	45%	86%
30	SUNDERGARH	2675	99%	99%	99%	99%	99%	99%	99%	99%	98%	93%	88%	69%	95%
	Total	58676	98%	98%	98%	97%	96%	96%	96%	95%	94%	91%	86%	79%	94%

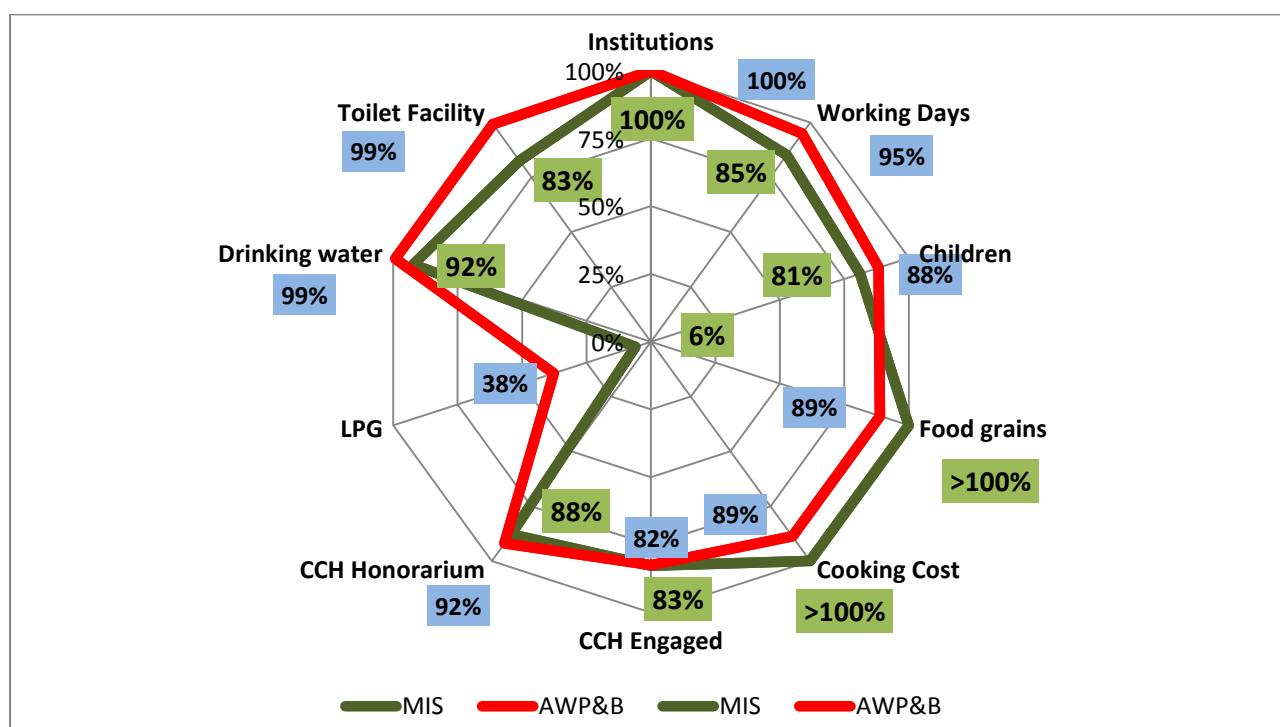
Source: www.trgmdm.nic.in

as on 21 May'18 till 13:49 hrs

3.4 Mismatch in Data from MIS and AWP&B :-

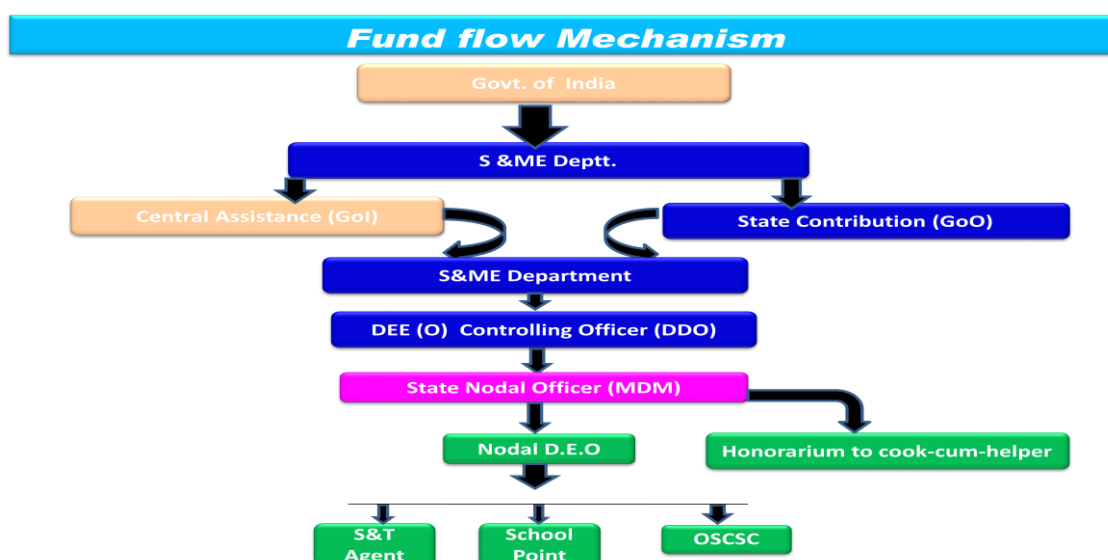
COMPONENT	MIS	AWP&B
Institutions	58676	58784
Working Days	203.4833333	227
Children	3929976	4273153
Food grains (In MT)	216792	115603
Cooking Cost (Rs. in Lacs)	114207	52799
CCH Engaged	120265	119951
CCH Honorarium (Rs. in Lacs)	12782	13387
LPG	3593	22210
Drinking water	54230	58301
Toilet Facility	48510	58301

The graphical representation of the differences in data from MDM-MIS and as submitted by the State through Annual Work Plan & Budget is given below:



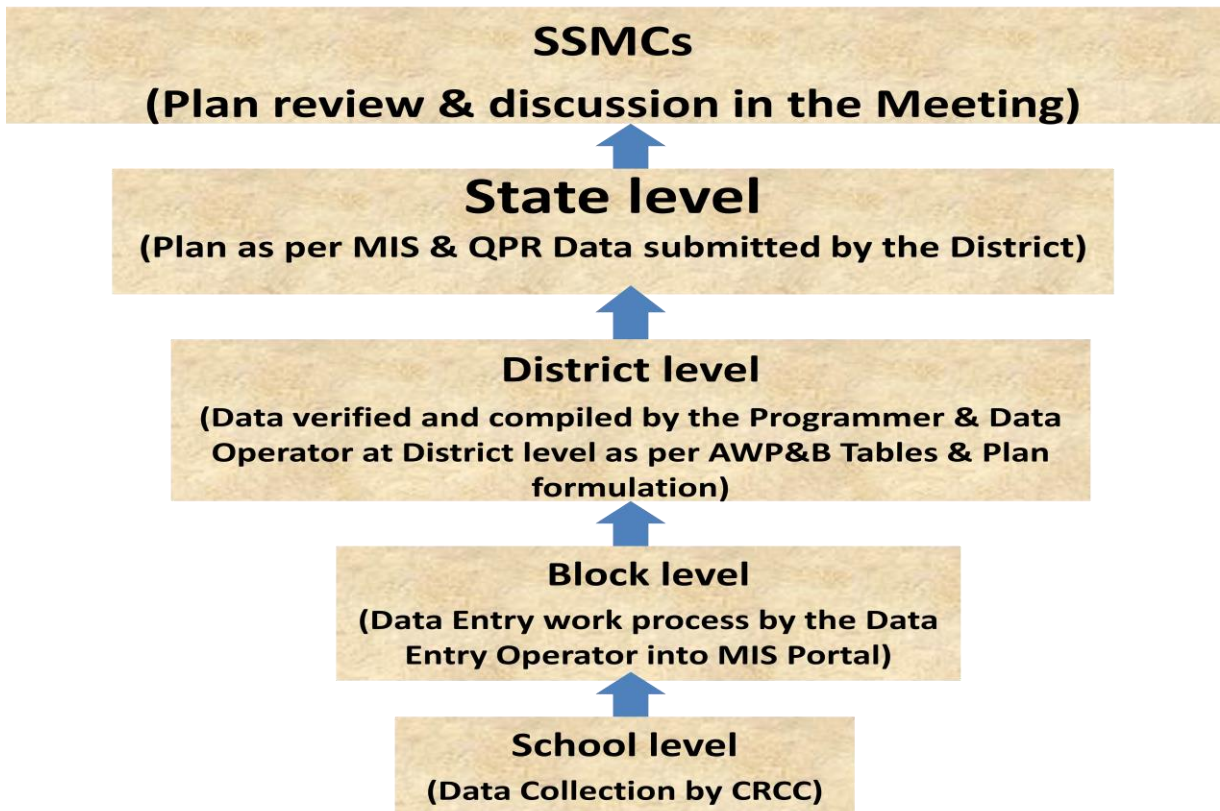
4. Fund Flow

Director, Elementary Education, who is the DDO and controlling officer so far as financial transactions are concerned draws the amount under different components of MDM scheme and deposits the same in the joint account of the SPMU. It takes maximum three days for drawl and deposit in the joint account. The same fund is transferred to the Districts through e-transfer the same day. At District level DEOs with the approval of the Collector releases funds meant for each school of the Block through e-transfer to the joint Account maintained at school within seven days of receipt. At school level, joint account in the name of the HM & SHG/ SMC has been opened.

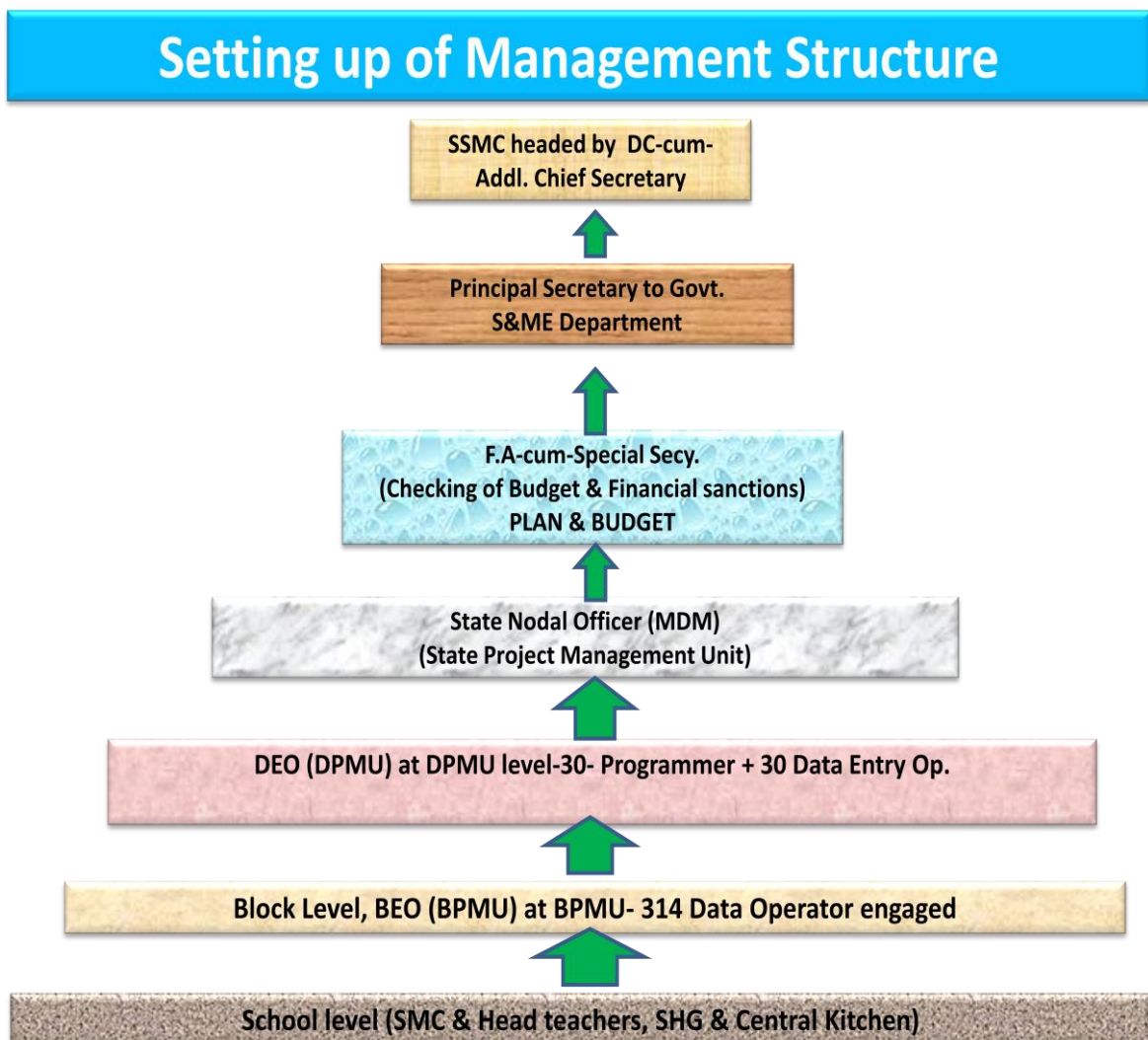


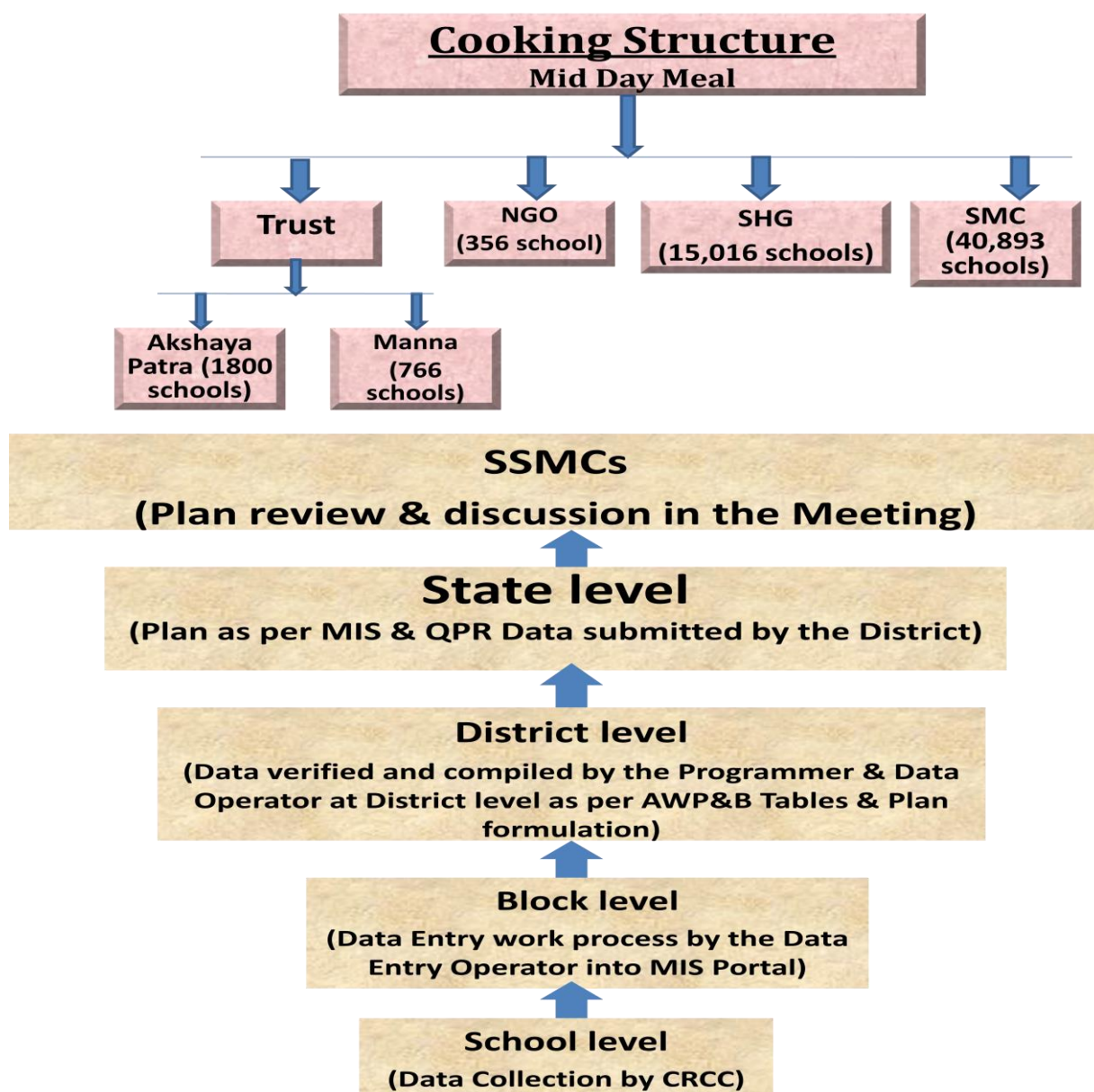
Type of Installment	Date of receipt by				
	State	Directorate	District	Block	GP/School
Ad-hoc	24.04.17	28.06.17	07.07.17		
1 st Installment	13.07.17	01.09.17	22.09.17		
2 nd Installment	01.12.17	11.01.18	25.01.18		
2 nd Instalment	28.12.17	21.02.17	26.02.18		

5. Process of Plan Formulation:



6. Management Structure





7. Capacity Building

10 number of BEOs, 100 CRCCs, 250 Headmasters trained at State level. Almost all CCHs trained at block level, CD, hard copy materials printed in local language. All District Education Officers (DEOs), Block Education Officers (BEOs) and ABEOs trained by UNICEF. All Head Masters and Cook-cum-Helpers are proposed to be trained during 2018-19.

8. Grievance Redressal Mechanism

A student helpline has been opened at OPEPA and is being used for the programme. The Department . Has opened a control room and installed toll free telephone as a measure for Grievance Redressal Mechanism, PMIS of Secretary. The complaints received from students / parents through student helpline are being sent to the concerned Collectors for immediate

redressal. Video Conferencing is being held at regular intervals with District Collectors & other senior officials of the district for smooth implementation of the programme.

9. Testing of Meal by accredited Labs

Food Safety Commissioner has already been appointed. In the State FSSAI Laboratory, Bhubaneswar, food Samples are to be collected by Food Safety Officer (FSO) both from school kitchen and central kitchen in a random manner for testing the Microbiological (E.Coli, Salmonella, & Sheghela) and Calorific Value (Carbohydrate, protein & fat) test for improvement of food quality. 61 food samples were got tested from the accredited laboratories out of which 5 were found to be below norms. The concerned DEOs have been advised by the State to take necessary action against the defaulters.

10. Tasting of meal :

It was instructed to make food taste by teacher/ Cook-cum-Helper/SMC/Mother Committee/ Parents before serving to the children. A register is to be maintained on daily basis.

11. Monitoring & Supervision

Present monitoring structure at various levels is given below :

Internal	-	External
Commissioner-cum-Secretary	-	Monitoring Institutions
All Directors under S&ME Deptt.	-	Third Party Evaluation
State Nodal Officer (MDM)	-	Social Audit
SPMU Staff	-	Convergence Partner
District Education Officers at District level	-	
Block Education Officers	-	
Asst. Block Education Officers	-	
CRCCs	-	
SMCs	-	

12. Kitchen Gardens :

Total no. of institutions	Total institutions where setting up of kitchen garden is possible	No. of institutions already having kitchen gardens	No. of institutions where setting up of kitchen garden is in progress	No. of institutions where setting up of kitchen garden is proposed during 2018-19
58784		10474	4037	15729

13. Social Audit

Social Audit has not been conducted by the State.

Part : C - State Govt.'s Proposals for 2018-19 and PAB -MDM Approvals for 2017-18

S. No.	Component	PAB Approval 2017-18	Proposal for 2018-19	Recommendations of Appraisal Team
1	Institutions			
1.1	Primary	33936	33936	33936
1.2	Upper Primary	24848	24848	24848
1.3	NCLP	0	0	0
2	Children			
2.1	Primary	2961774	2945988	2737061
2.2	Upper Primary	1657912	1895669	1640643
2.3	NCLP	0	0	0
	Total			
3	Working Days			
3.1	Primary	239	239	239
3.2	Upper Primary	239	239	239
3.3	NCLP	0	0	0
4	Cook cum Helper*			
4.1	Primary	145522	145522	145522
4.2	Upper Primary			
5	Drought			
5.1	Children (Pry)	0	0	0
5.2	Children (U Pry)	0	0	0
5.3	Working days	0	0	0
5.4	Cook-cum-helpers	0	0	0
6	Non Recurring			
6.1	Kitchen cum Store	0	0	0
6.2	Kitchen Devices(New)	0	190	190
6.3	Kitchen Devices (Replacement)	0	0	0
7	Central Assistance (Rs in Crore)			
7.1	Regular	0	490.58	449.55
7.2	Drought	0	0	0

7.3	Kitchen cum Store	0	0	0
7.4	Kitchen Devices	0	0.095	0.095
7.5	Kitchen Devices (Replacement)	0	0	0
Grand Total		466.96	490.68	449.65

ODISHA

Quantification of Central Assistance as per Existing Norms

A. Food grains

Sl.	Stage	No. of Children	Working days	Quantity MTs.
1	Primary (@ 100 gms per child per school day)	2737061	239	65415.76
2	U. Primary (@150 gms per child per school day)	1640643	239	58817.05
3	NCLP (@150 gms per child per school day)	0	0	0
TOTAL		4377704		124232.81

B. Cost of Foodgrains, Cooking cost, Transport Assistance, Hon. to cook-cum-helpers and Management Monitoring and Evaluation (MME)

Sl. No.	Component	Amount admissible (Rs. in lakh)
1	2	3
Primary		
1	Cost of Food grains @ Rs. 3000/- per MT for Rice and @ Rs. 2000/- per MT for wheat	1962.47
2	Unit Cooking Cost- Rs. 4.13 per child per day	
2.1	Central Share @ Rs. 2.48 per child per day	16223.11
2.2	Minimum Mandatory State Share @ 1.65 per child per day	10793.60
3	Transportation Cost @ Rs. 750.00 Per MT food grains	490.62
4	Honorarium for cook cum Helper	
4.1	Central Share - (Rs 600 x 10 months)	8731.32
4.2	State Share - (Rs. 400 x 10 months)	5820.88
5	Management Monitoring and Evaluation (MME) @ 1.8% of 1) Cost of food grains 2) Cooking cost 3) Cost of transportation and 4) Honorarium to cook – cum-helpers	493.34
Total Central Share		27900.85

Upper Primary		
6	Cost of Food grains @ Rs. 3000/- per MT for Rice and @ Rs. 2000/- per MT for wheat	1764.51
7	Cooking Cost- Rs. 6.18 per child per day	
7.1	Central share @ Rs.3.71 per child per day	14547.42
7.2	Minimum Mandatory State Share @ Rs.2. 47 per child per day	9685.21
8	Transportation cost @ Rs. 750.00 Per MT food grains	441.13
9	Honorarium to Cook-cum-Helpers	
9.1	Central Share - (Rs 600 x 10 months)	Mentioned in primary
9.2	Minimum Mandatory State Share- (Rs. 400 x 10 months)	
10	Management Monitoring and Evaluation (MME) @ 1.8% of 1) Cost of food grains 2) Cooking cost 3) Cost of transportation and 4) Honorarium to cook – cum-helpers	301.56
Total Central Share		17054.61
Grand Total for Central Share (Pry + Upper Primary)		44955.46

C. Non-recurring : 9.50 Lakh

D. Total Requirement of Funds for 2018-19

(Rs. in lakh)

Component		Centre Share	Minimum Mandatory State share
Recurring	Normal	44955.46	26299.69
	Drought	0	0
Non- recurring		9.50	0
Total		44964.96	26299.69

--oOo--

